

#### BE COURTEOUS

When shooting or hunting always acquire the permission of the landowner. Respect the land. Do not litter, use gates when possible, leave open gates open and closed gates closed. Drive vehicles only where advance permission has been granted and always express gratitude for use of another persons land. Offer your labor or game as repayment for the privilege of use. Remember you are helping develop a reputation for all sportsmen sportswomen.



Hamidiye Mh. 525 Sk. No.19  
42700 BEYŞEHİR / KONYA / TURKEY  
PHONE : +90 332 512 26 07  
FAX : +90 332 512 65 97  
GSM : +90 544 903 10 03  
Web : [www.tomahawk.com.tr](http://www.tomahawk.com.tr)  
e-mail : [mu@tomahawk.com.tr](mailto:mu@tomahawk.com.tr)



# M&U

## TOMAHAWK SHOTGUNS

### PUMP-ACTION SHOTGUN INSTRUCTION MANUAL

**READ THE INSTRUCTIONS AND  
WARNINGS IN THIS CAREFULLY  
BEFORE USING THIS FIREARM**

## GUN SAFETY RULES

Observe these rules of safe gun handling.

**1. Always keep the muzzle pointed in a safe direction. Watch the muzzle at all times: never point a gun, accidentally or intentionally, at any person or anything you do not intend to shoot. Identify the target before shooting; do not shoot at sounds.**

**2. Always treat any gun as if it is loaded - it may be!**

**3. Keep your finger off the trigger while operating the action and at all other times until you are ready to shoot.**

**4. Keep the safety "on" or in the "safe" position at all times until you are ready to fire the gun. to shoot.**

**Do not rely on your gun's safety, the safety on any gun is a mechanical device and is not intended as a substitute for common sense or safe gun handling.**

**5. Learn how your gun functions and handles.** If you do not thoroughly understand the proper use and care of your gun, seek the advice of someone who is knowledgeable.

**6. Do not alter or modify any parts of a firearm.**

**7. Store guns unloaded, separate from any ammunition, and where children cannot get to them.**

**8. Be sure the barrel is clear of any obstructions before loading.** Make it a habit to check the barrel every time before loading.

**9. Be sure you have and use the proper ammunition.** A 20 gauge shell will enter a 12 gauge chamber far enough so that a 12 gauge shell can be loaded behind it. Also, a 3 inch shell may fit into a 2 3/4 inch chamber, but the crimp at the mouth of the shell will unfold into the forcing cone. If either of these things occur and you fire the gun, the gun will explode, damaging the gun and possibly causing serious injury or death to you and those around you

**10. Wear protective shooting glasses and adequate hearing protection when shooting.**

**11. Never climb or jump over anything, such as a tree, fence, or ditch, with a loaded gun.** Open the barrel, remove the shells, and hand the gun to a friend

or place it on the ground on the other side of the obstacle before crossing it yourself. Do not lean a gun against a tree or other object; it could fall and possibly discharge.

**12. Do not shoot at a hard surface or at water.** Bullet and shot can ricochet or bounce off and travel in unpredictable directions with great velocity.

**13. Never transport a loaded gun.** Do not place a loaded gun into a vehicle. The gun should be unloaded and placed into a case when not in use.

**14. Never drink alcoholic beverages before or during shooting.**

### INTRODUCTION TO TOMAHAWK

For many years, **Tomahawk** has been importing quality shotguns. Combine the old world quality with modern technology, and you have **Tomahawk** Shotguns.

We at **Tomahawk** thank you for the privilege of delivering a product to you that will provide you with years of pleasurable use. Happy shotgunning.

### ABOUT YOUR SHOTGUN

Your **Tomahawk** shotgun is manually operated. Once a shell has been fired the locking lug in the bolt moves down, unlocking the gun. The forearm can then be moved to the rear and then forward again, ejecting and loading a new shell.

To open the bolt without firing the gun, depress the action bar lock, located just beside and forward of the trigger. This allows for opening action without dry firing.

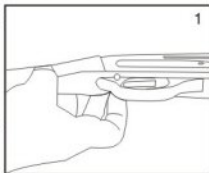
### SAFETY SWITCH OR BUTTON

The safety is designed to stop the trigger mechanism.

**DON'T RELY ON YOUR GUN'S SAFETY. TREAT EVERY GUN AS IF IT WERE LOADED AND READY TO FIRE.** The safety on any gun is a mechanical device, and it is not intended as a substitute for common sense or safe gun handling. Always keep the muzzle pointed in a safe direction.

**A.** The safety is located behind the trigger, and provides protection against accidental or unintentional discharge under normal usage when set when properly.

**B.** To engage the safety, push the button so that it protrudes from the right side of the gun and the **RED BAND MARKING CAN NOT BE SEEN.** The safety should always be in the "on" or "safe" position until you intend to fire the gun (photo 1).



**C.** When you are ready to fire the gun, press the safety button to the "off" or "fire" position, so that the safety protrudes from the left side of the gun and the **RED BAND MARKING IS SHOWING.**

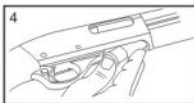
**DANGER:** The gun will fire when the trigger is pulled intentionally or accidentally when the **RED BAND MARKING IS SHOWING.**

## ASSEMBLY

1. Remove the magazine cap.
2. Press upward on the action bar lock. Pull the forearm approximately halfway rearward.
3. Hold the barrel ahead of the barrel guide ring (see picture 2)
4. Slide the barrel guide ring over the magazine tube. Clean the barrel following the instructions on page 8
5. Press upward on the action bar lock.
6. Align the ejector on the inside of the barrel with the slot in the bolt.
7. Carefully seat the barrel into the receiver DO NOT FORCE IT!
8. Replace the magazine cap. Tighten.

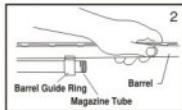
## DISASSEMBLY

1. Put safety in the on position.
2. Point firearm in a safe direction.
3. Push up on the action bar lock
4. Slide forearm forward half way.
5. Unscrew and remove the magazine cap.
6. Pull the barrel carefully out of the receiver.
7. Push the carrier upward.
8. Depress and hold the action bar lock.
9. Slide the forearm forward and off of the magazine tube.



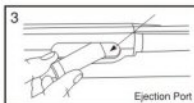
## LOADING YOUR SHOTGUN ONE SHELL ONLY

1. Put safety in the on position.
2. Point gun in a safe direction.
3. Push up on the action bar lock.
4. Pull the forearm completely to the rear.
5. Put one shell through the ejection port making sure it is the right (See picture 3)
6. Push the forearm forward and close the action



## FULLY LOADING YOUR SHOTGUN

1. Put safety in the on position.
2. Point gun in a safe direction.
3. Push up on the action bar lock.
4. Pull the forearm completely to the rear.
5. Put one shell through the ejection port, making sure it is of the correct gauge and length. (See picture 4)
6. Push the forearm forward and close the action
7. Push a shell up ward against the bottom of the carrier. (See picture 4)
8. Push two(2) to (4) shells, one at a time, fully forward into the magazine tube.



Ship the firearm prepaid to:

**Tomahawk**  
M&U SHOTGUN INDUSTRY

Hamidiye Mh. 525 Sk. No.19  
42700 BEYŞEHİR / KODVA / TURKEY  
PHONE : +90 392 512 28 07  
FAX : +90 392 512 95 87 GSM : +90 544 903 10 09  
Web : www.tomahawk.com.tr  
e-mail : mu@tomahawk.com.tr

## INSTALLATION OF MAGAZINE PLUG

Some Federal, State and local hunting regulation may require that be limited to a maximum shell capacity of three (3) rounds.

Your shotgun has been packet with a magazine plug for this purpose.

### Installation:

1. Remove the forend screw cap.
  2. At the threaded end of the magazine tube (where the forend screw cap fits) you will locate a black snap ring.
  3. A large blade screw driver should be used to remove the snap ring.
- CAUTION: The snap ring will be under pressure from the magazine spring.** Do not remove the snap ring in a manner where the ring could fly out and strike you or anyone else causing injury, particularly to the eye.
4. Compress the magazine spring into the magazine tube, and insert the snap ring so the snap ring end is flush with the end of the tube.

## THANK YOU

Thank you for purchasing a **Tomahawk** shotgun We are sure this gun will bring you years of hunting and/or shooting pleasure. Your satisfaction is the key to our success. Please let us know if we can be of service and please relay any observations about your guns performance or appearance.

## PURCHASER'S RECORD

Model Number \_\_\_\_\_

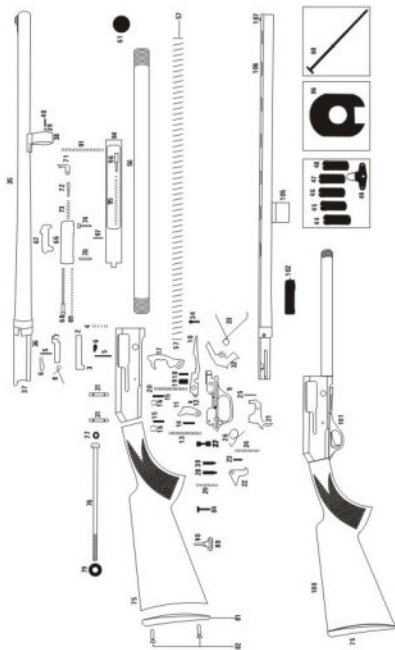
Purchase Date \_\_\_\_\_

Gauge or Caliber \_\_\_\_\_

Serial Number \_\_\_\_\_

Purchase Price \_\_\_\_\_

Store Name \_\_\_\_\_



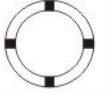




6

PART NO	DESCRIPTION	PART NO	DESCRIPTION
1	Receiver	46	Mobile choke #3
2	Bolt release latch	47	Mobile choke #2
3	Magazine extractor handle rivet	48	Mobile choke #5
5	Magazine extractor pin	49	Mobile choke key
7	Magazine handle bolt	56	Magazine tube
8	Magazine handle spring	57	Magazine spring
9	Trigger body	59	Magazine follower
10	Carrier	60	Magazine tube shorter
11	Carrier latch	61	Magazine cap
12	Carrier latch handle rivet	66	Breech bolt
13	Carrier latch retainer cartridge spring	67	Locking bloke
14	Carrier latch retainer cartridge	68	Firing pin
15	Carrier cartridge	69	Firing pin spring
16	Carrier cartridge segment	70	Firing pin retainer
17	Hammer	71	Extractor
18	Hammer retainer pin	73	Extractor spring bolt
19	Hammer release cartridge	74	Extractor retainer pin
20	Hammer retainer spring	75	Stock
21	Trigger	76	Stock screw
22	Inner safety	80	Stock swivel
23	Inner safety press cartridge	81	Butt plate
24	Inner safety trigger spring	82	Butt plate screw
25	Inner safety trigger pin	86	Butt plate
26	Trigger press spring	91	Forend pin
27	Safety	94	Action bar
28	Safety retainer cartridge	95	Bolt extractor
29	Safety spring	96	Bolt extractor pin
30	Safety release pin	97	Operation pin
31	Trigger set pin	100	Stock with butt plate
32	Bolt lock	101	Trigger set
33	Bolt lock spring	102	Breech bolt
34	Bolt lock screw	104	Barrel with rib
35	Cylindrical barrel	105	Rib
36	Bearing bold	107	Gold rear sight
37	Cap pin		
38	Pump ring		
39	Pump ring ball		
40	Pump ring spring		
41	Mould rear sight		
45	Mobile chock #4		

7

## USAGE OF CHOKE TUBES

The choke is what controls the openness or tightness of the pattern of your shotgun. The chart below lists the choke available (from open to tight), and the corresponding marks that indicate the choke of your specific shotgun.

	SKEET	IC	M	IM	F
CHOKE TUBE					
BBLs	C L	****	***	**	*

Never fire or run gun cleaning tools through a barrel that uses choke tubes without having a choke tube installed. The threads of the choke tube and the internal threads of the barrel should be cleaned after each use and before installation of the tube.

To install a tube, insert the tube into the barrel and tighten with your fingers. Once the tube is finger tightened, tighten with the appropriate choke-tube wrench until the tube is snug. **DO NOT over tighten or forcefully tighten with wrench.**

## MAINTENANCE AND CLEANING

**Caution: Make sure the gun is unloaded.**

1. Make sure that the broad, polished, finely fitted mating surfaces of the breech block and receiver are especially clean and lightly oiled with a high quality gun oil. Do not use silicone or lanolin.

2. Run an oil patch through the bore with a cleaning rod starting from the breech end. To prevent leading, use a cleaning solvent and brass brush to clean the bore periodically. Follow this cleaning with one or two clean oil patches. **Important:** If your gun is equipped with choke tubes, do not use a brass brush to clean the barrels unless a choke tube is installed in each barrel. Barrels that utilize choke tubes must also have the choke tubes removed to clean and oil the threads inside the barrel and the choke tubes themselves. This will protect the threads from being damaged by cleaning tools and also prevent a dirt build up that would cause the choke tube to become difficult to remove.

Never fire your gun without choke tubes snugly tightened in barrels. Do not over tighten choke tubes. Wipe all exposed metal surfaces with an oiled cloth before storing. Do not squirt or pour oil into the inside mechanism because it may

hamper proper functioning and will soak the wood. After extended periods of heavy use, your gun should be taken to a qualified gunsmith to have the action disassembled for professional cleaning and lubrication.

3. Care for your wood stock and forearm the same way you would a piece of furniture with the same finish.

## STORAGE

Clean thoroughly and oil your gun before storage. Store the gun in a case to prevent scratches and dents. Store in a dry place to prevent corrosion. Store the gun away from children and in a place where it cannot be obtained by those unauthorized to use it. Always store gun unloaded and separately from any ammunition.

## IMPORTANT

### USAGE OF STEEL SHOT

The choke (bore constriction) in all modern shotguns has been established based on the pattern performance of shot shells loaded with lead shot. When using the steel shot shells, you will notice a different performance in pattern density versus the established lead shot pattern, because the steel shot is harder and lighter than lead shot.

**You should be aware of the following differences and cautions :**

**Never shoot steel shot loads in a full choked barrel or full choke tubed barrel. To do so may cause the barrel to swell or rupture.** In general, steel shot fired with a modified choke will produce the equivalent of a lead full choke pattern. This will be true of all steel shot sized up to and including no. 2. The established improved cylinder chokes will produce the equivalent of a (lead) modified choke pattern.

All steel shot sized larger than no. 2, and including special sized such as -F- "T", etc, should be used only with improved cylinder chokes. These steel shot sized, when used in improved cylinder chokes, will produce pattern equivalent to (lead) full choke patterns. The established cylinder choke or bore will produce the equivalent a modified (lead) pattern.

Additional information concerning the use of steel shot is available from Remington, Winchester, Federal and other ammunition companies.

## PARTS

To order parts, please furnish the following information: Your name, address, telephone number, firearms serial number, make and model. When we receive your request we will send you an order form and parts breakdown with prices.

## SERVICE AGREEMENT AND LIMITED WARRANTY

**Tomahawk** agrees to service its products free of charge for defects in materials and workmanship in accordance with the service agreement listed below. The obligation of **Tomahawk** under this agreement is limited to the repair or replacement of unserviceable parts and does not cover any incidental or consequential damages. Other than the express warranty contained herein **Tomahawk** makes no warranties, express or implied.

**Tomahawk** will repair or replace any unserviceable part(s) for one (1) year from date of purchase and further will supply free parts (Wood not included) for an additional four (4) years in accordance with the above warranty statement provided your firearm had not been altered, abused, willfully damaged, or damaged by overpressure ammunition. This agreement is not transferable; its benefits apply only to the original purchaser.

To obtain free service during the time this agreement is in effect, make sure your firearm is unloaded, and send it to **Tomahawk**

This agreement and the warranties contained herein are void if your registration card is not received with a copy of your sales slip within 30 days from date of purchase

## SHIPPING

When returning your gun for service, please take care in packing. Disassemble your gun, wrap in paper or other protective material and place gun in the original box. (THIS BOX WILL PROTECT THE GUN BUT IS NOT DESIGNED FOR SHIPPING). Wrap box in a cardboard box approved for interstate shipping. **Tomahawk** is not responsible for damage incurred during shipping.

## WARRANTY CARD

PURCHASER \_\_\_\_\_

Street \_\_\_\_\_

City \_\_\_\_\_ State \_\_\_\_\_ Zip \_\_\_\_\_

Phone \_\_\_\_\_

Purchase Date \_\_\_\_\_

PRODUCT: Model \_\_\_\_\_ Gauge \_\_\_\_\_ Serial # \_\_\_\_\_

SIGNATURE \_\_\_\_\_

Please sign and return this card to validate warranty